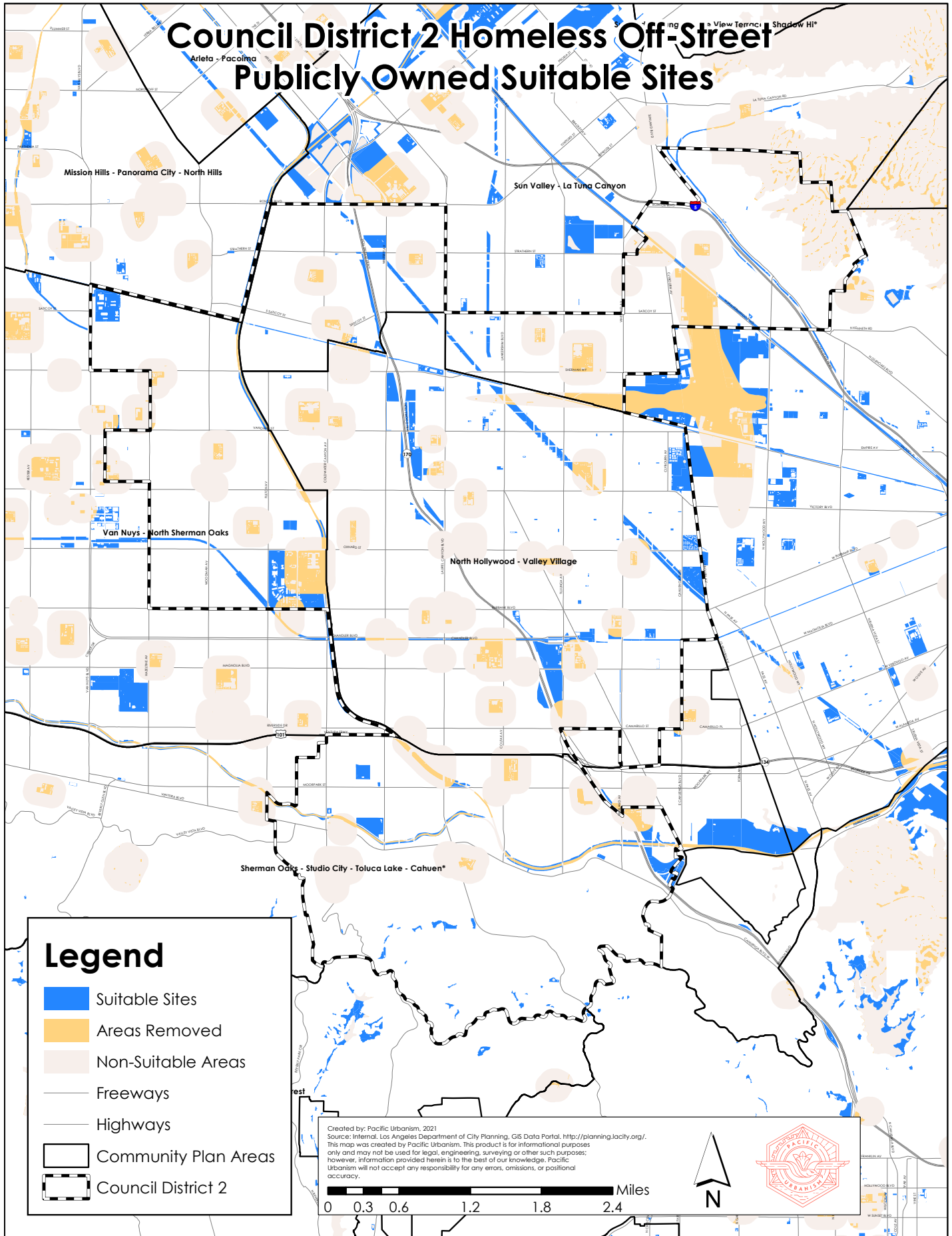
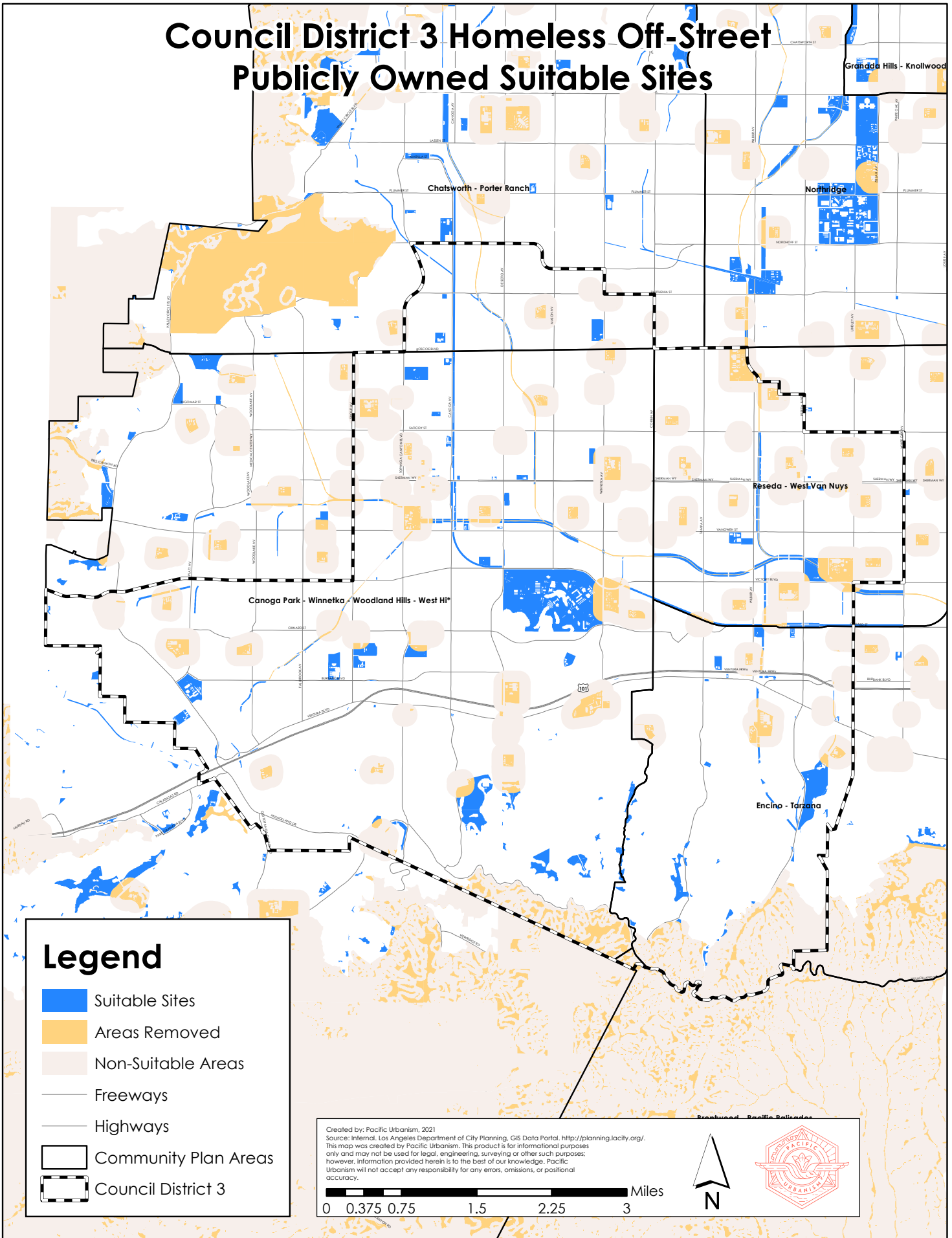


Council District 2 Homeless Off-Street Publicly Owned Suitable Sites



Council District 3 Homeless Off-Street Publicly Owned Suitable Sites



Legend

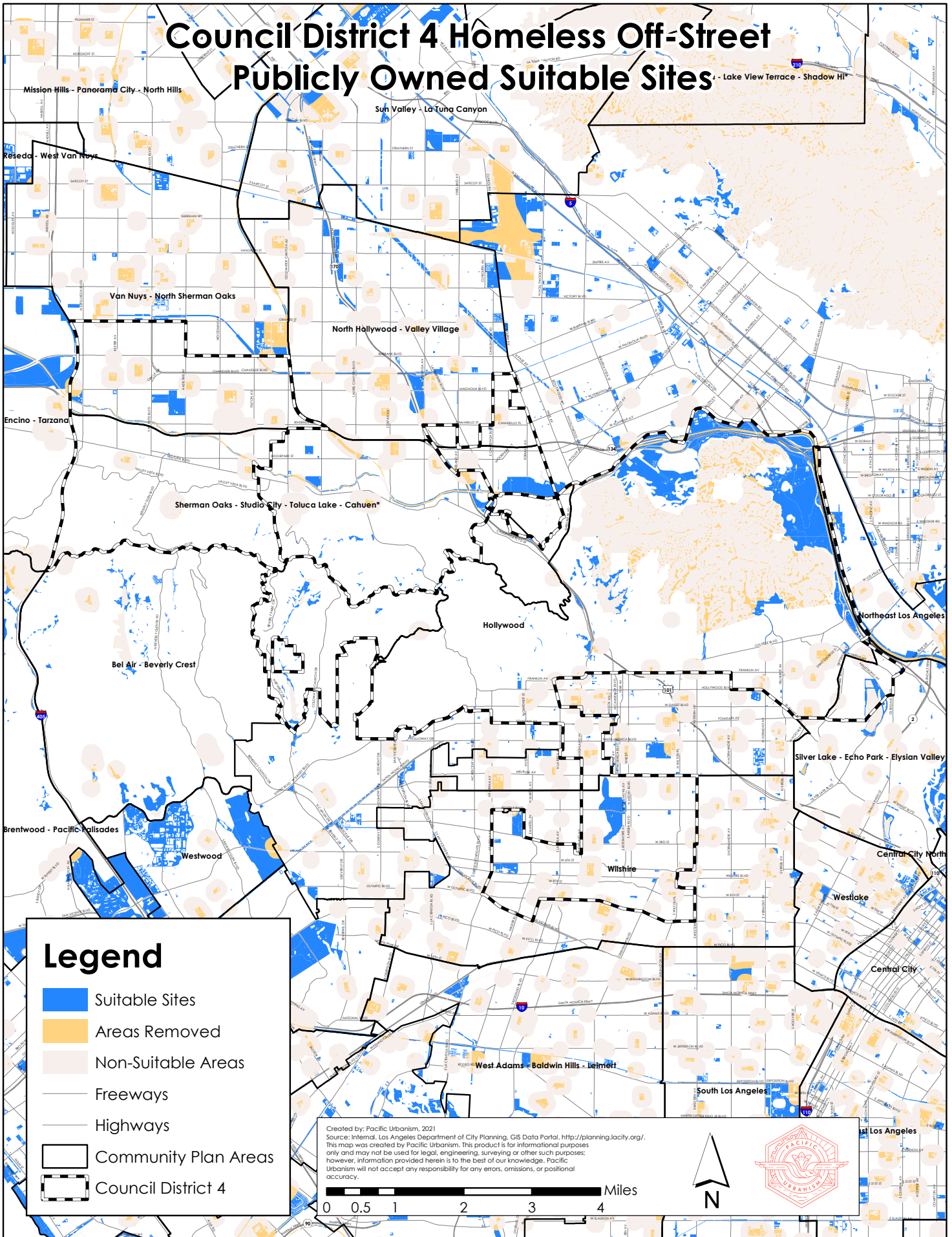
- Suitable Sites
- Areas Removed
- Non-Suitable Areas
- Freeways
- Highways
- Community Plan Areas
- Council District 3

Created by: Pacific Urbanism, 2021
 Source: Internal, Los Angeles Department of City Planning, GIS Data Portal, <http://planning.lacity.org/>.
 This map was created by Pacific Urbanism. This product is for informational purposes only and may not be used for legal, engineering, surveying or other such purposes; however, information provided herein is to the best of our knowledge. Pacific Urbanism will not accept any responsibility for any errors, omissions, or positional accuracy.

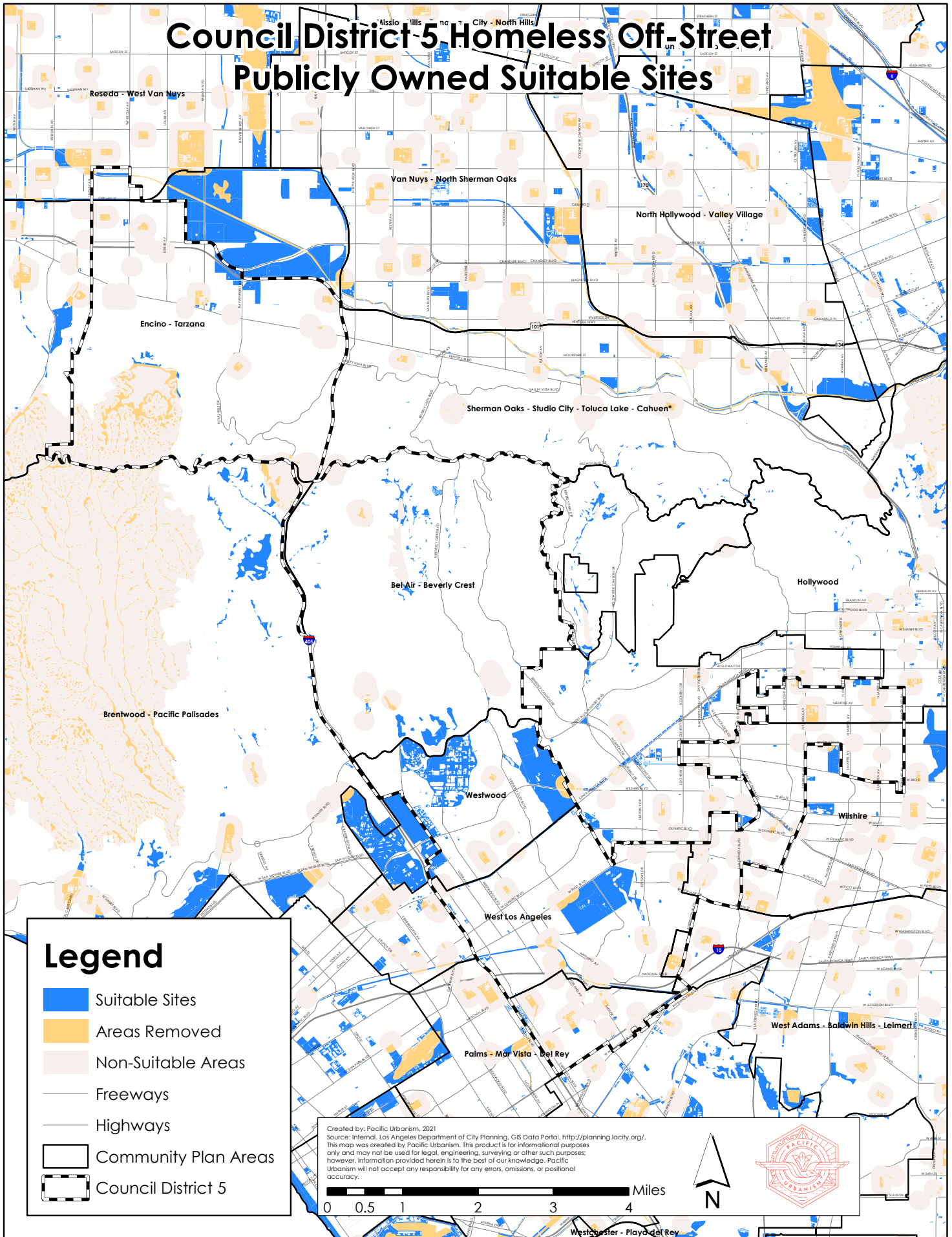
0 0.375 0.75 1.5 2.25 3 Miles



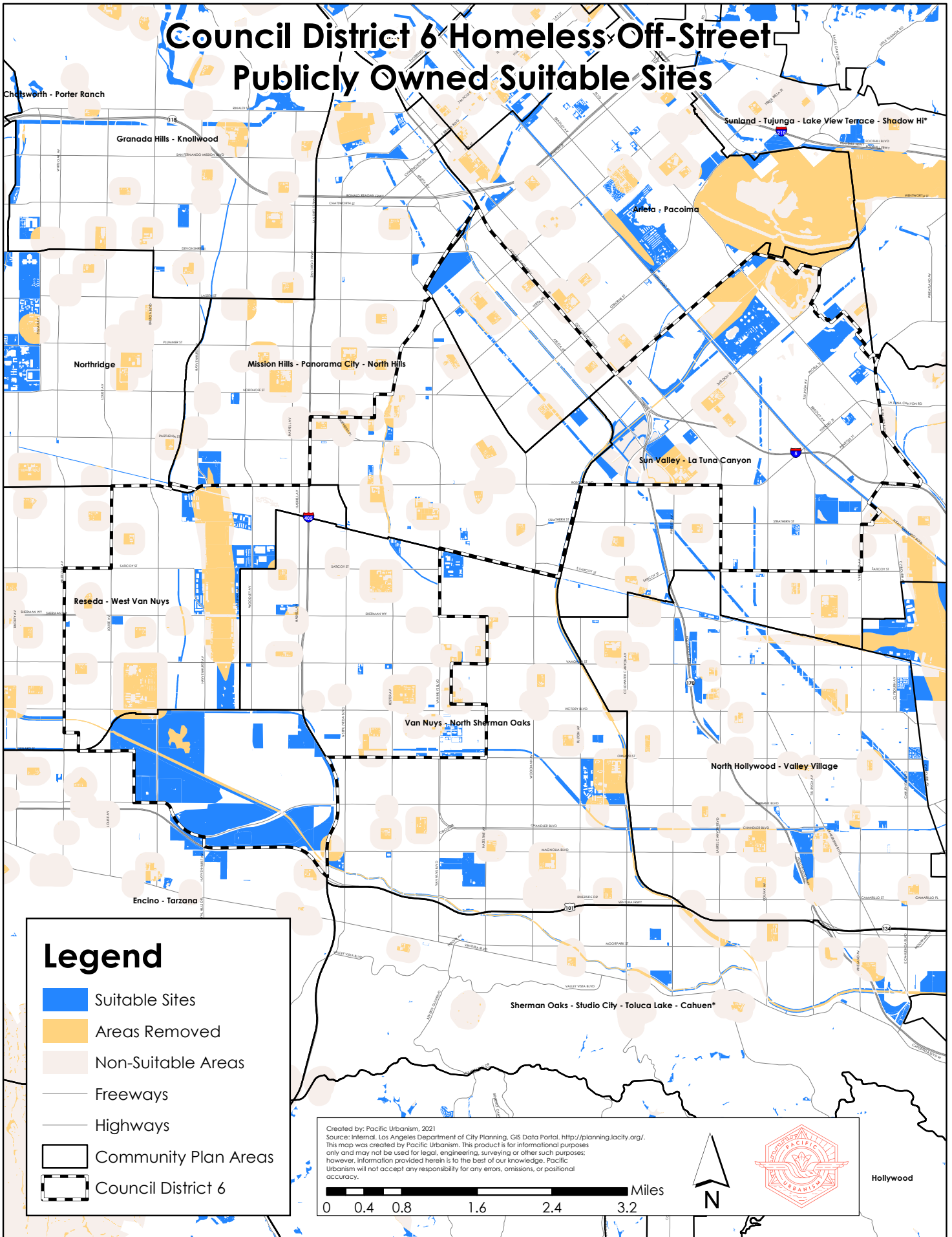
Council District 4 Homeless Off-Street Publicly Owned Suitable Sites



Council District 5 Homeless Off-Street Publicly Owned Suitable Sites



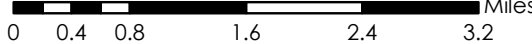
Council District 6 Homeless Off-Street Publicly Owned Suitable Sites



Legend

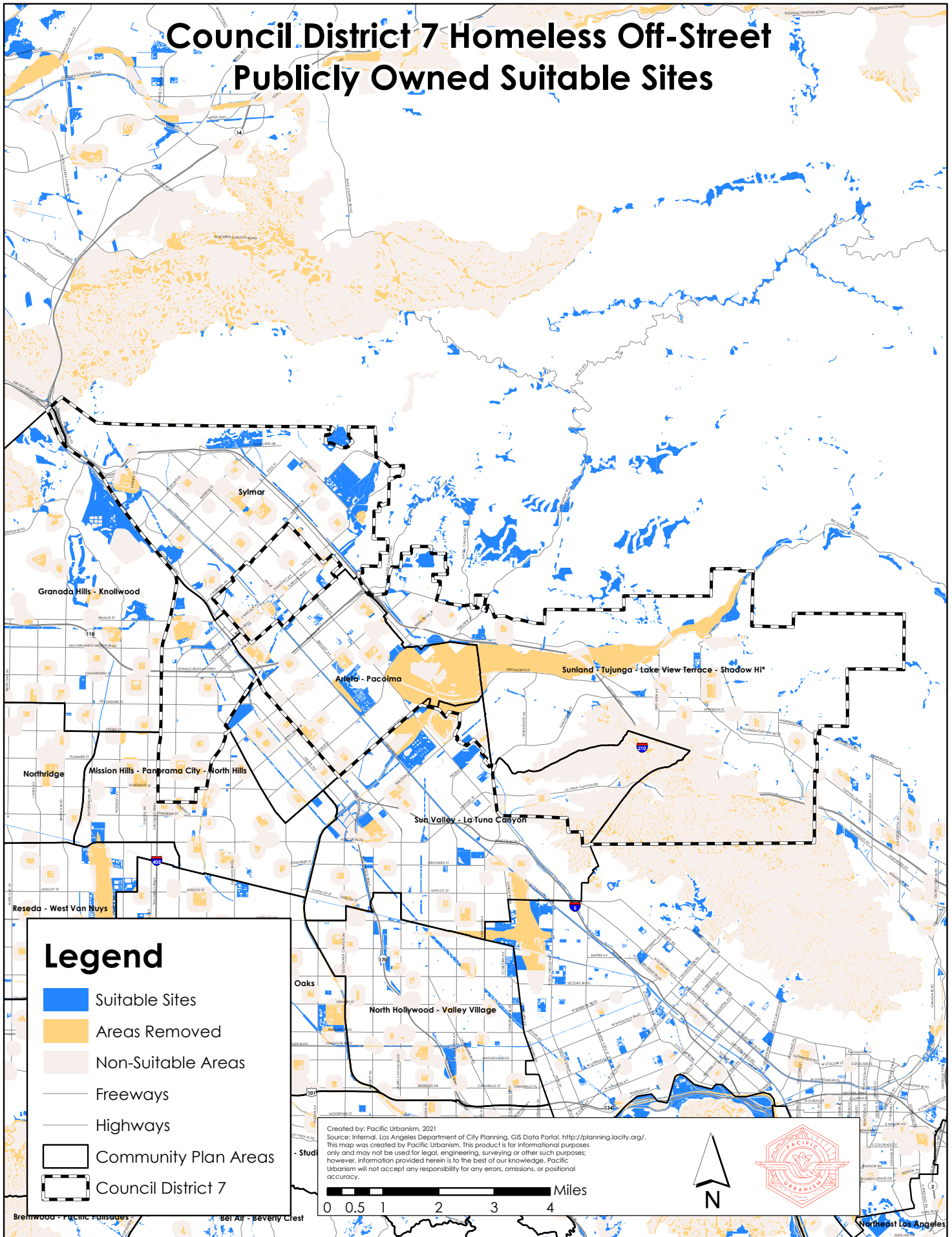
- Suitable Sites
- Areas Removed
- Non-Suitable Areas
- Freeways
- Highways
- Community Plan Areas
- Council District 6

Created by: Pacific Urbanism, 2021
 Source: Internal, Los Angeles Department of City Planning, GIS Data Portal, <http://planning.lacity.org/>.
 This map was created by Pacific Urbanism. This product is for informational purposes only and may not be used for legal, engineering, surveying or other such purposes; however, information provided herein is to the best of our knowledge. Pacific Urbanism will not accept any responsibility for any errors, omissions, or positional accuracy.

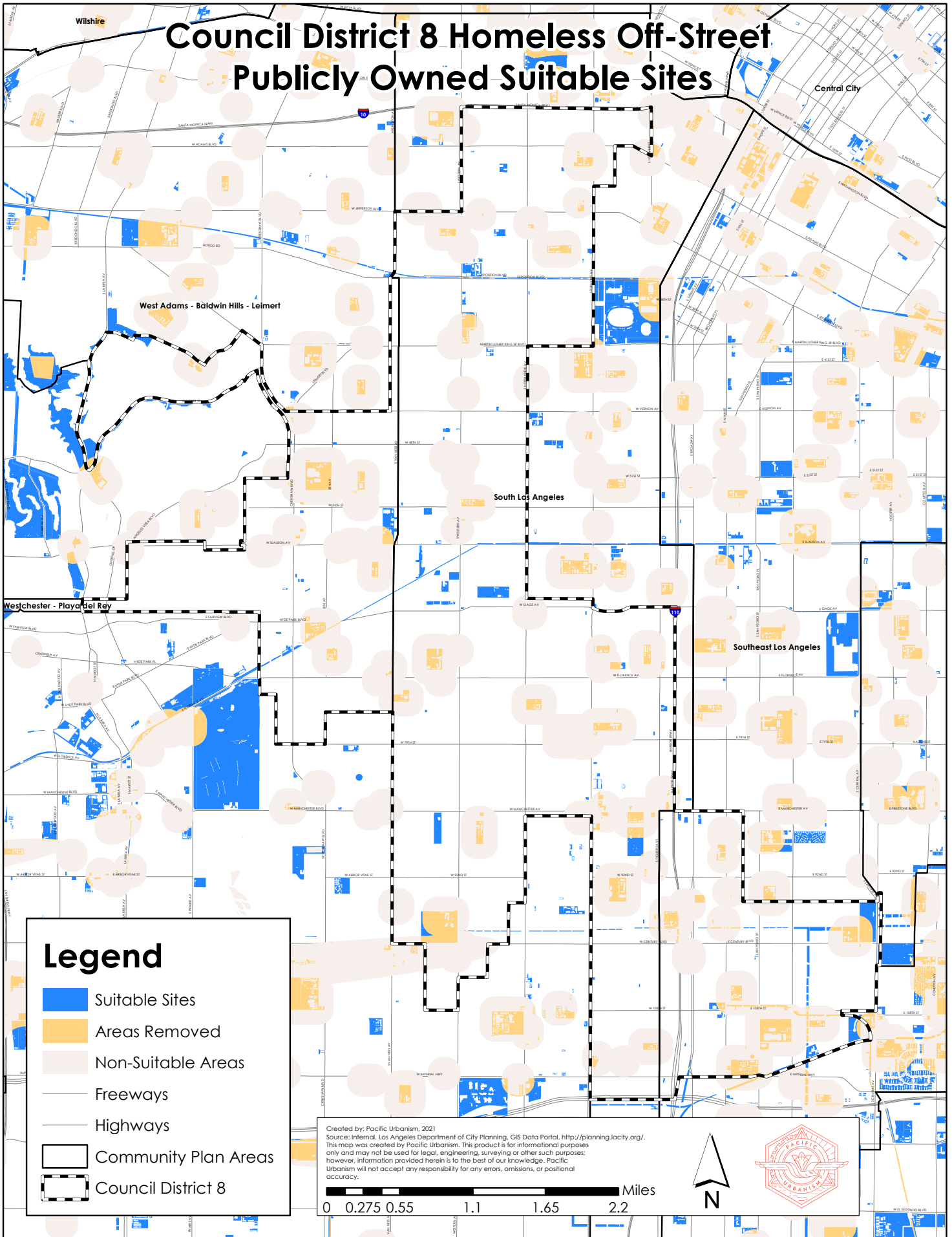


Hollywood

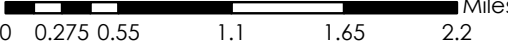
Council District 7 Homeless Off-Street Publicly Owned Suitable Sites



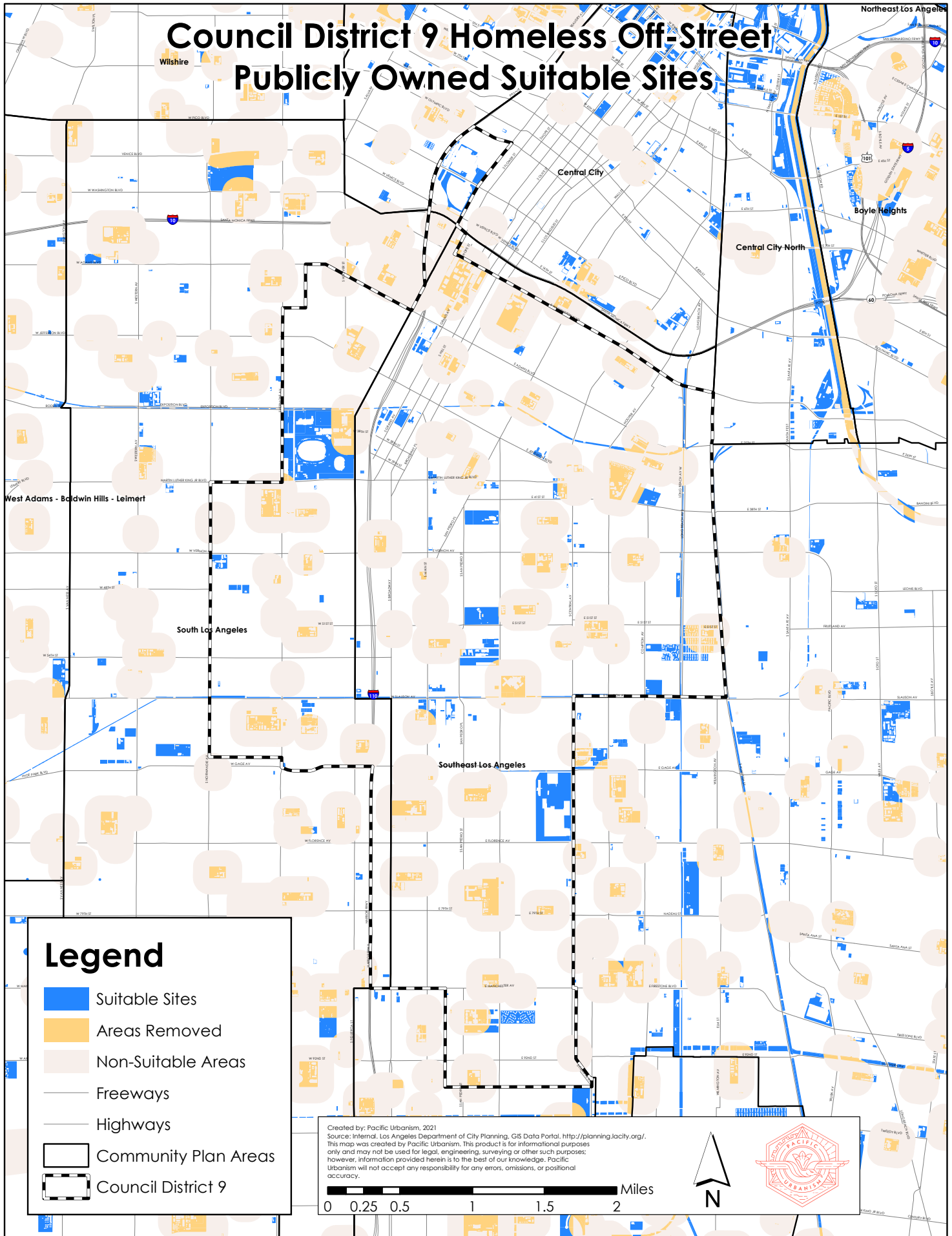
Council District 8 Homeless Off-Street Publicly Owned Suitable Sites



Created by: Pacific Urbanism, 2021
 Source: Internal, Los Angeles Department of City Planning, GIS Data Portal, <http://planning.lacity.org/>.
 This map was created by Pacific Urbanism. This product is for informational purposes only and may not be used for legal, engineering, surveying or other such purposes; however, information provided herein is to the best of our knowledge. Pacific Urbanism will not accept any responsibility for any errors, omissions, or positional accuracy.



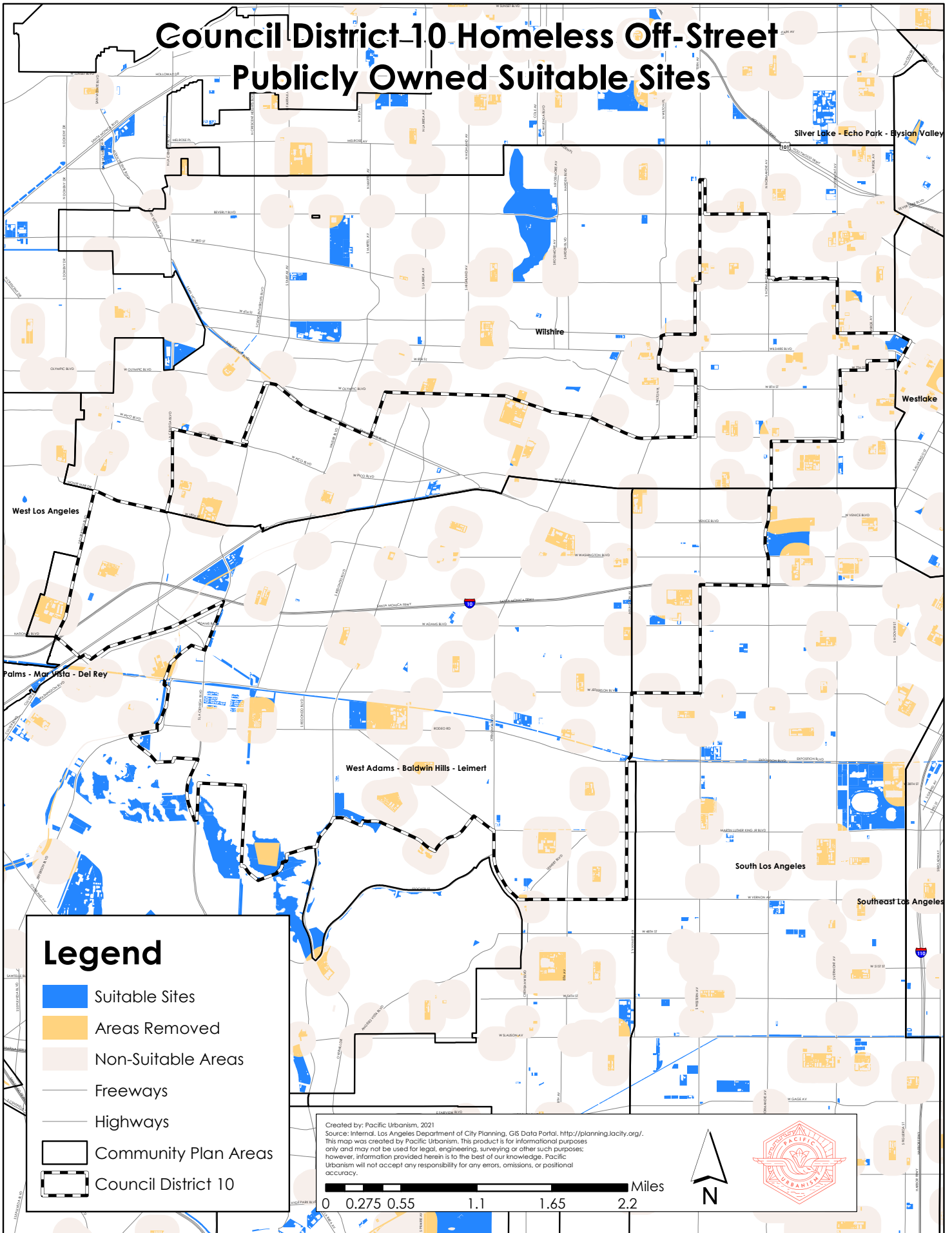
Council District 9 Homeless Off-Street Publicly Owned Suitable Sites



Created by: Pacific Urbanism, 2021
 Source: Internal, Los Angeles Department of City Planning, GIS Data Portal, <http://planning.lacity.org/>.
 This map was created by Pacific Urbanism. This product is for informational purposes only and may not be used for legal, engineering, surveying or other such purposes; however, information provided herein is to the best of our knowledge. Pacific Urbanism will not accept any responsibility for any errors, omissions, or positional accuracy.



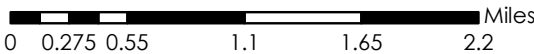
Council District 10 Homeless Off-Street Publicly Owned Suitable Sites



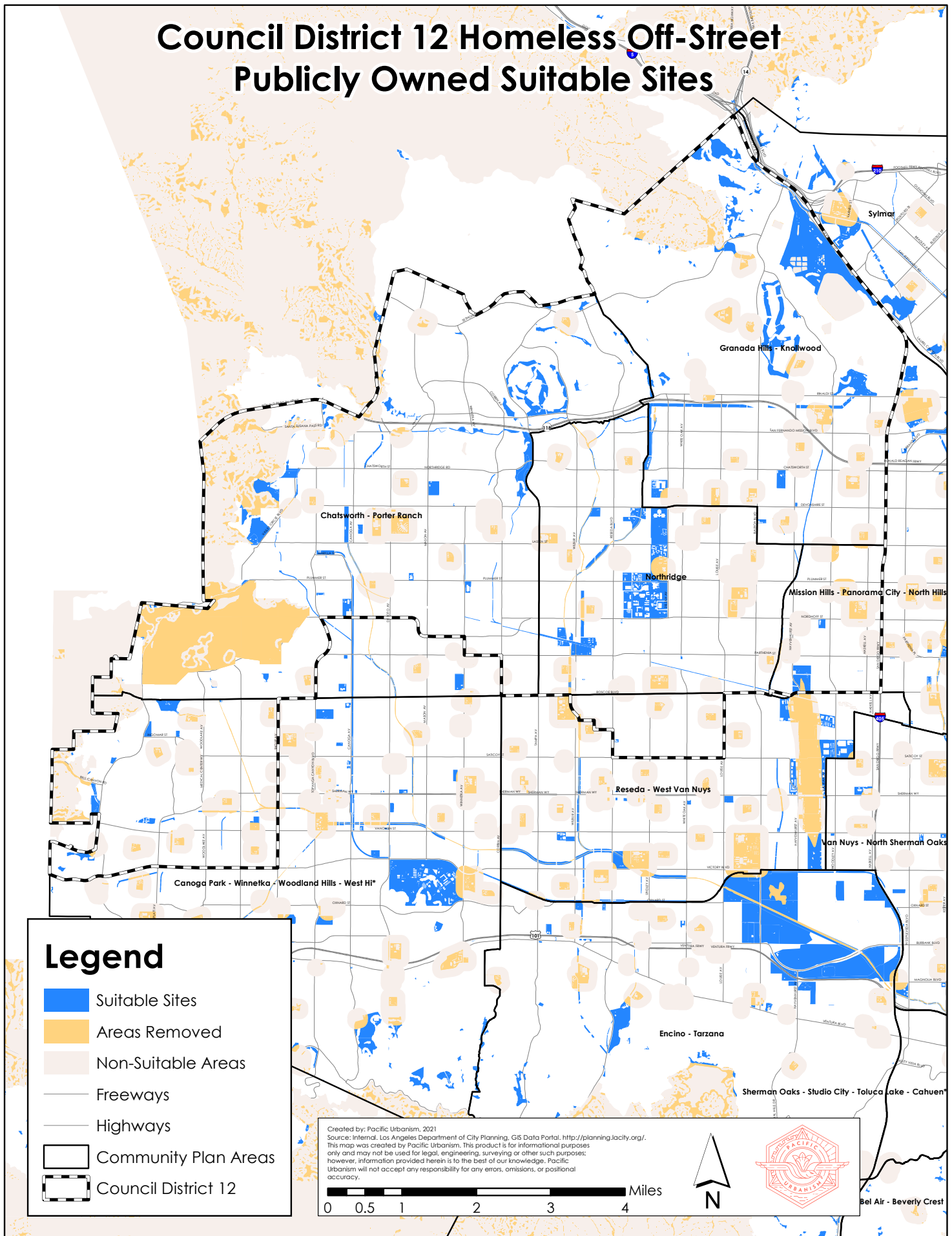
Legend

- Suitable Sites
- Areas Removed
- Non-Suitable Areas
- Freeways
- Highways
- Community Plan Areas
- Council District 10

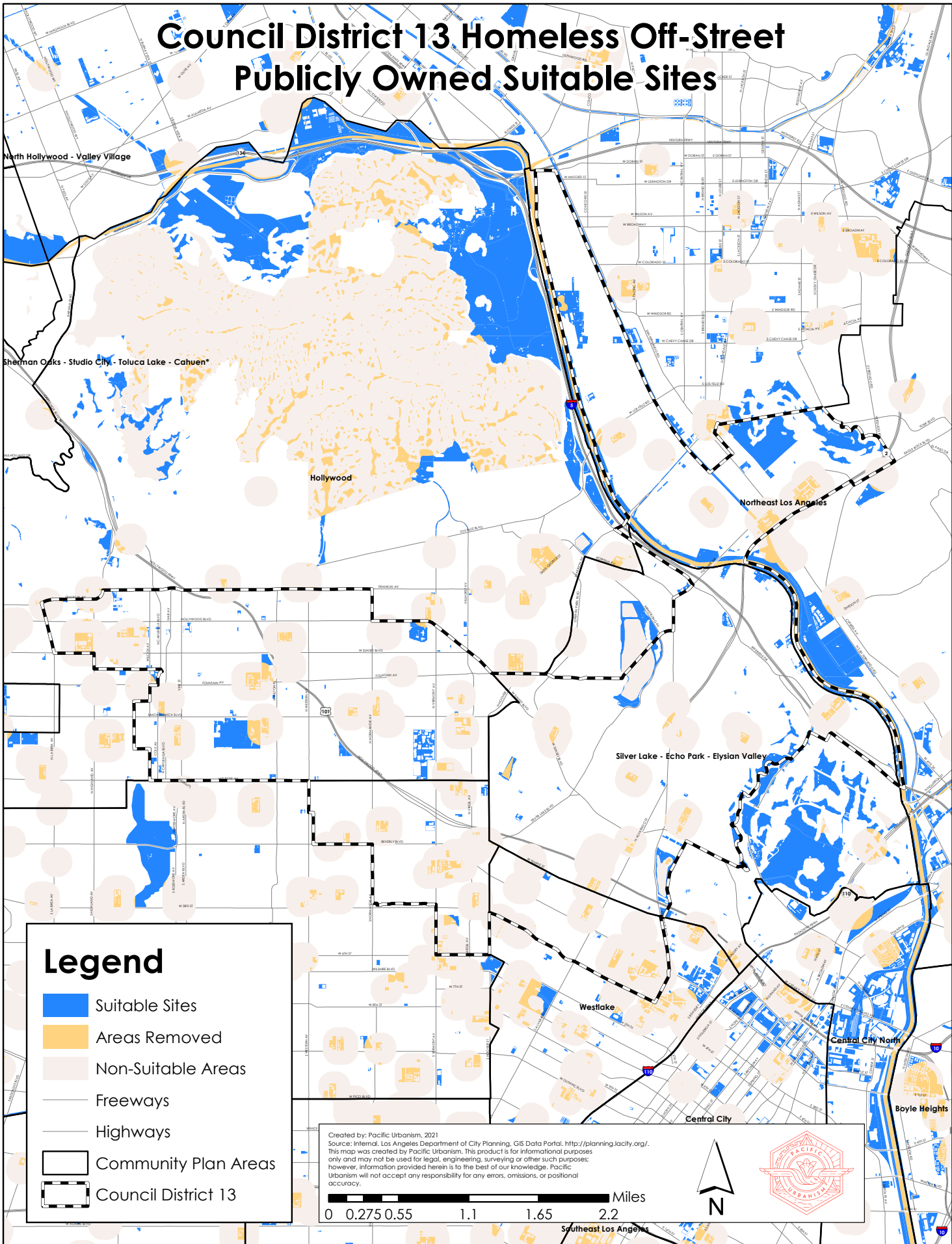
Created by: Pacific Urbanism, 2021
 Source: Internal, Los Angeles Department of City Planning, GIS Data Portal. <http://planning.lacity.org/>.
 This map was created by Pacific Urbanism. This product is for informational purposes only and may not be used for legal, engineering, surveying or other such purposes; however, information provided herein is to the best of our knowledge. Pacific Urbanism will not accept any responsibility for any errors, omissions, or positional accuracy.



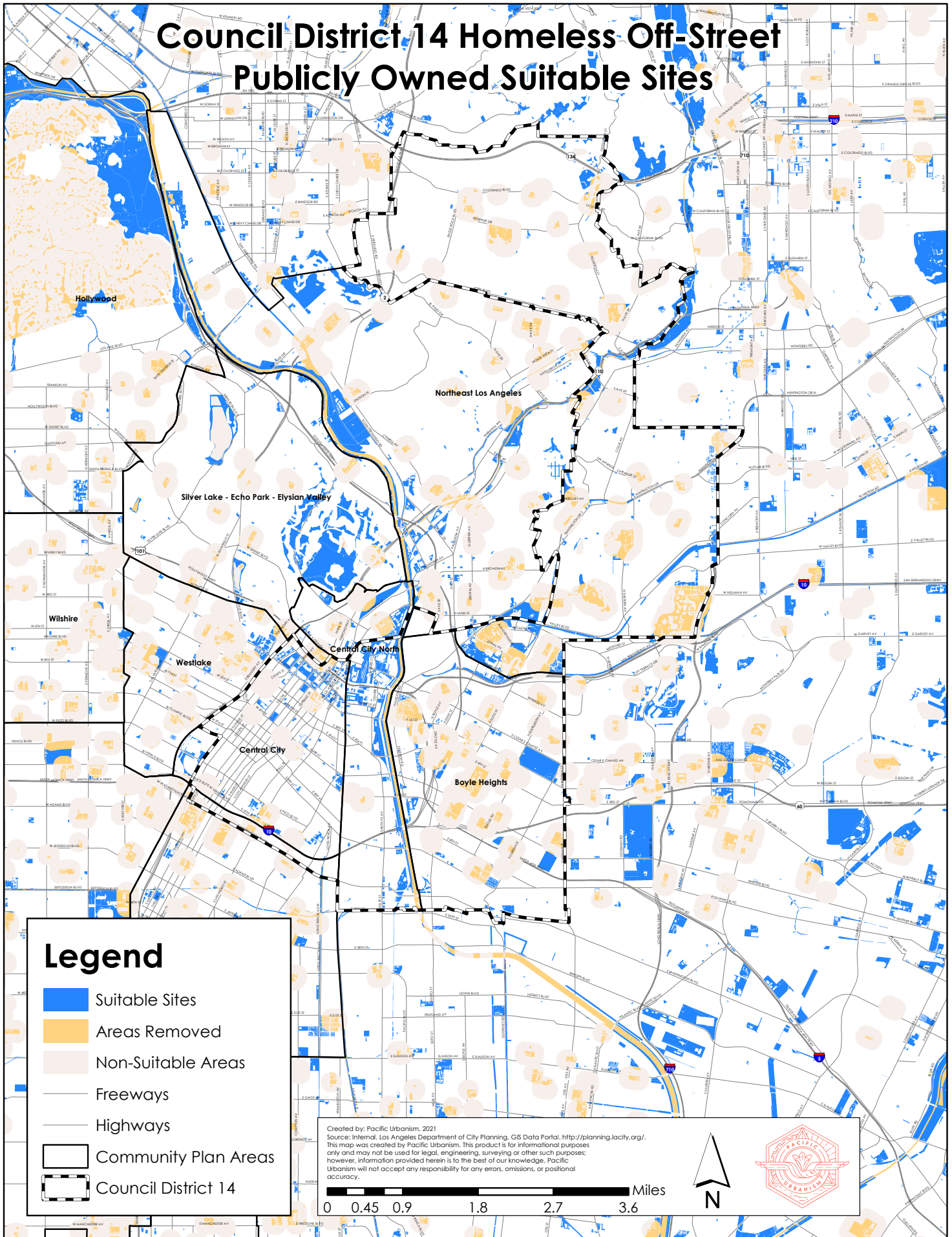
Council District 12 Homeless Off-Street Publicly Owned Suitable Sites



Council District 13 Homeless Off-Street Publicly Owned Suitable Sites



Council District 14 Homeless Off-Street Publicly Owned Suitable Sites



Council District 15 Homeless Off-Street Publicly Owned Suitable Sites

